

# CUSCINO MORBIDINO ANTISCIVOLO SHABBY

Anti-slipping Shabby Morbidino chair pad



Trattamento Antiscivolo  
Anti-slipping Treatment

## DATI TECNICI

Technical data

## Composizione

Composition

Sopra: 50% Cotone 50% Poliestere.

Imbottitura: Poliuretano espanso.

Sotto: 40% Cotone 60% Poliestere con Trattamento Antiscivolo.

50% Cotton 50% Polyester.

Stuffing: Polyurethane foam.

Backing: 40% Cotton 60% Polyester with Anti-slipping Treatment.

## Confezione

Packaging

Imballo: Scatola.

Pack: Carton.

Misura/Size 38x38x8

Imballo/packing 12

Bar-code 8016209073129



01



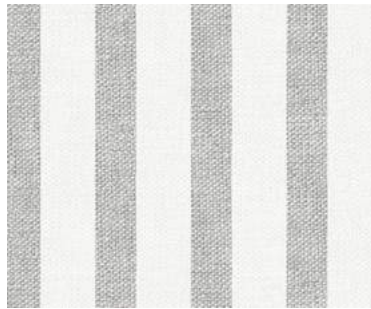
02



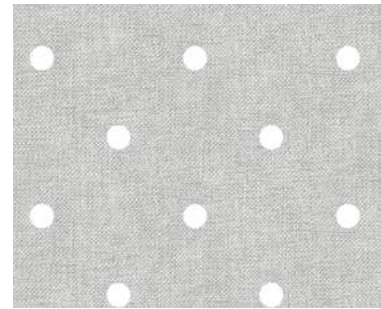
03



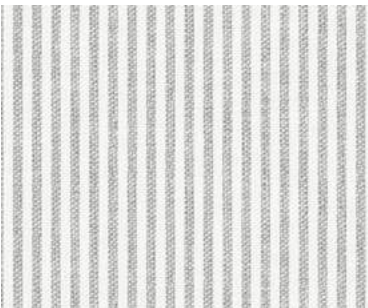
04



10



11



12